

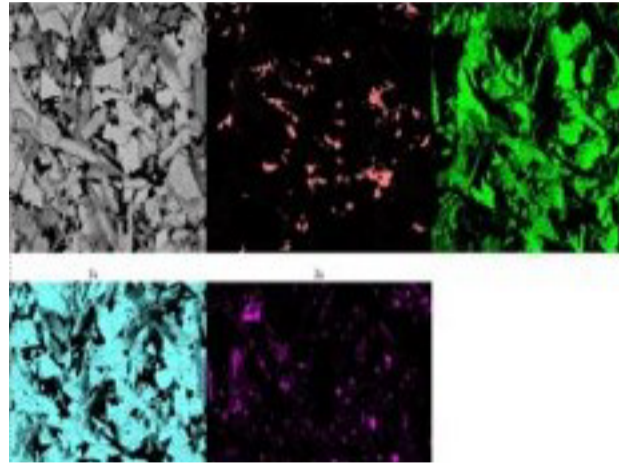
Coating Adherence on Tubing

Learn how our Material Support & Solutions team solved this customer material issue.



THE PROBLEM

The customer roll formed electro-galvanized steel to make their tubing product and applied a proprietary plastic coating to the tube's exterior. Field issues and internal rejections began to mount due to adherence problems between the plastic coating and the steel tube.



THE ANALYSIS

The cause of the adhesion issues were assessed at the Worthington Steel lab, utilizing Scanning Electron Microscopy (SEM)-EDX analysis. Contaminants in the customer's process were identified as the root cause of the loss of adherence.

"It is well known that problem avoidance is an important part of problem solving."

THE SOLUTION

Worthington helped the customer mitigate contaminant build-up. Raw material trials were proposed and executed to assist the effort. The customer was able to identify processing improvements to mitigate contaminates, resulting in the successful adhesion of the plastic coating.

— THE ACTION

If you need a cost-effective solution for coating adherence on electrogalvanized tubing contact the Materials Support & Solution team at Worthington.