

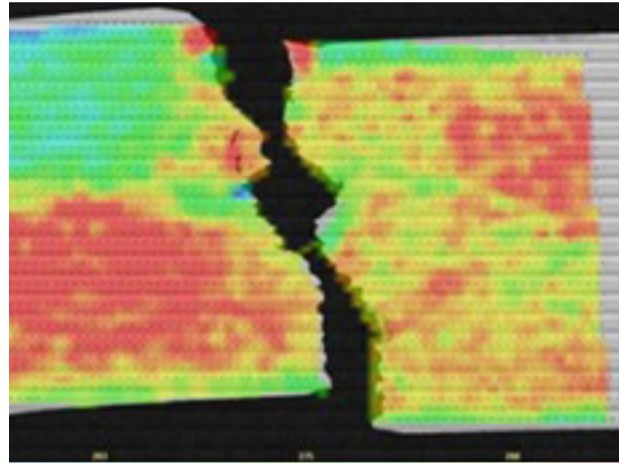
Cracking on Drawn Part

Learn how our Material Support & Solutions team solved this customer material issue.



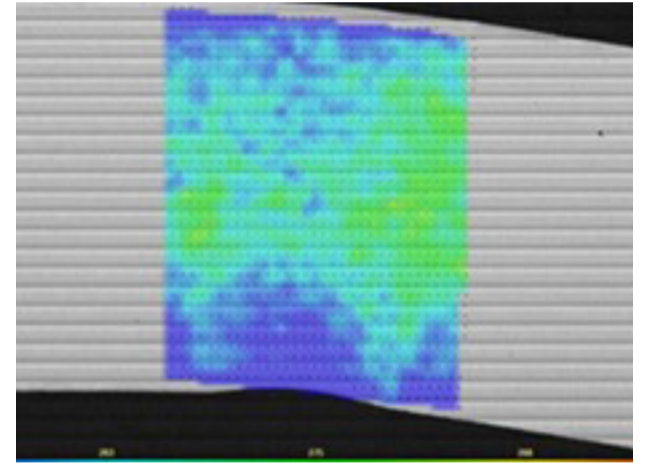
THE PROBLEM

The customer experienced cracking on a drawn part, which led to excess scrap and material waste.



THE ANALYSIS

Our Material Solutions team completed chemical composition and mechanical property analyses using our state-of-the-art in-house lab.



THE SOLUTION

From the analyses, Worthington provided the customer with refined guidelines for chemistry and mechanical properties within their specifications to ensure proper forming within their die.

— THE ACTION

When the root cause of intermittent cracking of formed parts can't be identified, contact the Material Support & Solution team at Worthington.