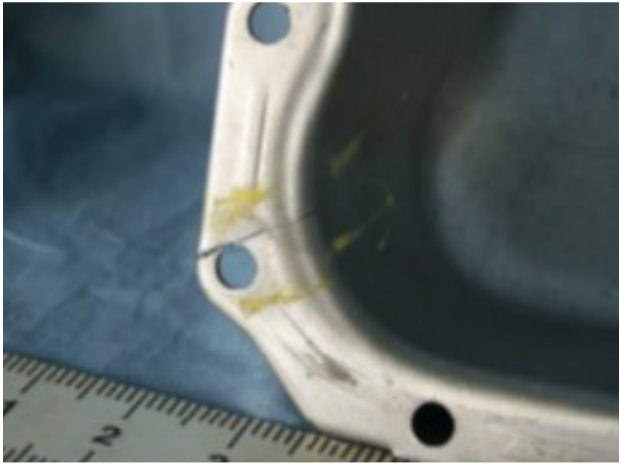


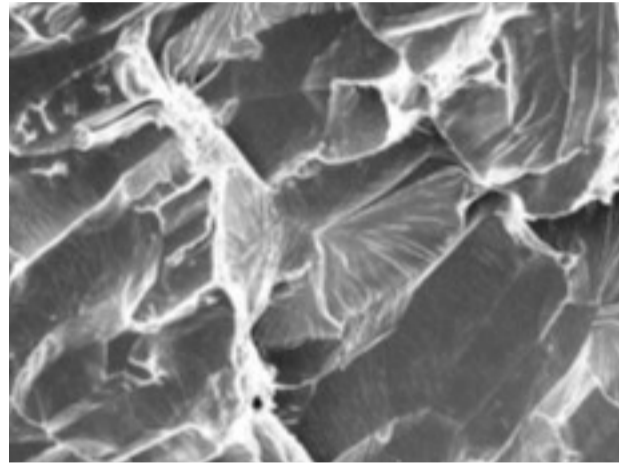
Formability Issue

Learn how our Material Support & Solutions team solved this customer material issue.



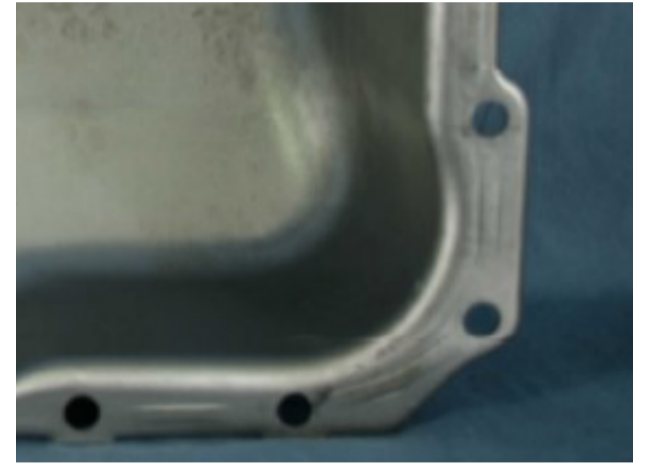
THE PROBLEM

Deep-drawn parts were sporadically cracking in the corners, resulting in excessive scrap, but all the customer's material specifications were being met.



THE ANALYSIS

Worthington metallurgists evaluated the cracking mechanism, chemistry, microstructure, and mechanical properties. They discovered the steel was work-hardening after it went through the first part of a two-part press, causing cracking on the second draw.



THE SOLUTION

Cracking was eliminated by increasing lubricity with a dry film lubricant and addressing the Secondary Cold Work Embrittlement (SCWE) with chemistry modifications.

— THE ACTION

If you want help finding a cost-effective solution for cracking in a deep drawn part, contact the Material Support & Solutions team at Worthington.