

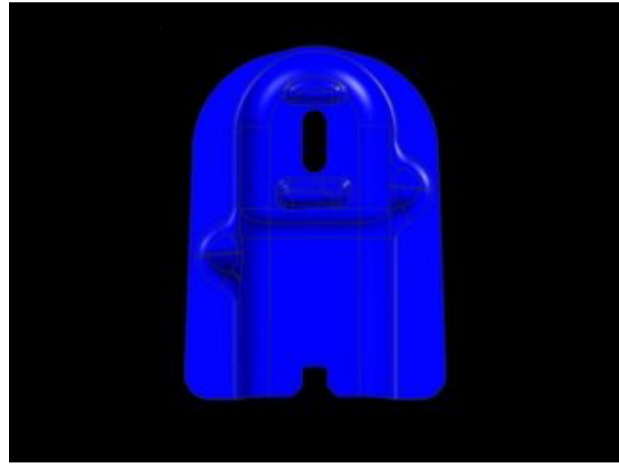
Improving Draw Performance

Learn how our Material Support & Solutions team solved this customer material issue.



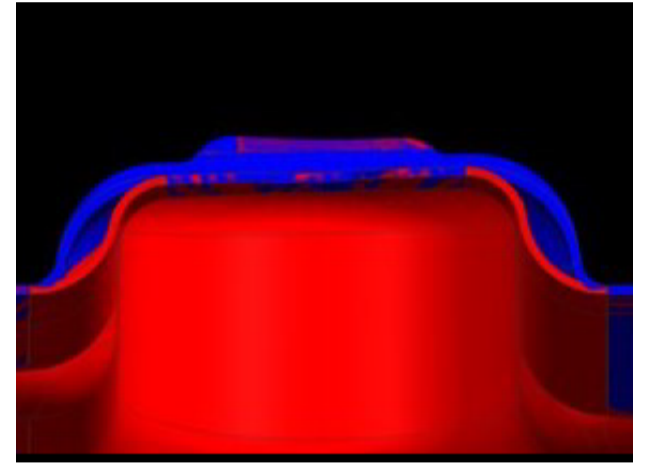
THE PROBLEM

Worthington was sourced on an aluminized heat shield with a difficult draw design that required more complex die-drawing properties than a typical shield. The part was splitting and not acceptable.



THE ANALYSIS

After the Materials Support and Solution team examined the product and material, they discovered that the drawn areas of the part required more forming than was possible with the current aluminized product.



THE SOLUTION

The solution was twofold. A new aluminized material with revised properties was specified, and the parts were redesigned to allow for successful forming using the newly specified steel. The prints were updated to ensure that parts could be successfully made in the future.

— THE ACTION

When quoting material that will ensure your product can meet specifications, contact the Materials Support & Solution team at Worthington.